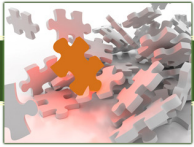


A Single Source for a Healthy Medical Practice.

If you are looking to implement EHR for the first time into your practice, or you know it's time to find a better one, Connect(x) HealthWare provides an integrated solution you can count on. Connect(x) brings decades of experience in managing the business and clinical workflow for medical operations.



Multiple Vendors vs. Single Source

Many EHR's don't offer truly **integrated** components such as Chart(x) PACS, Image Viewer, e-prescribing, PQRI reporting or billing. Instead, modules are licensed, separate systems "pasted" together. The end result is expensive and creates complicated interfaces. With Connect(x) HealthWare you have **one** phone number and one support call because you have **ONE** system.



Stimulus Incentives

There is a narrow window of opportunity to take advantage of stimulus incentives.

Connect(x) HealthWare is committed to providing you with the **certified tools and modules** necessary for your practice to capture all the stimulus dollars for which you qualify.



e-Prescribing

Your practice should be enjoying all the benefits that e-prescribing brings. **Chart(x) EHR** allows users to e-prescribe by using NewCrop, LLC which is Surescripts certified for prescription benefit, prescription history and prescription routing services."

Medical providers have comprehensive, real-time, and secure web-based access to this information which can also be sent to a PDA."



Price, Service and the Fine Print

Our packages can be customized to meet the needs of your practice and can include e-prescribing, a billing module, complete billing services, or even a hosted solution. Upgrades and system-wide, expert customer service are always included.

The price for all of this? We think you'll be pleasantly surprised.

www.connectxhealthware.com



910.604.6040
toll free: 877.216.8984

EMR, PM, medical imaging, billing, and much more...



That's what you get with Connect(x) HealthWare. Built on a scalable and distributable web platform, the Chart(x) EHR is designed for delivery on your intranet or VPN (virtual private network) or can be accessed securely over the Internet. System functionality includes:

- Chart(x) PACS
- Image Viewer
- easy to use; fast and reliable
- insurance tracking to eligibility checking
- exam & resource scheduling
- configurable procedure templates
- SOAP reporting
- comprehensive e-Prescribing
- data access tracking
- management reporting
- multi-site support
- claims file management
- AR management
- document imaging
- integrated patient education materials
- equipment management tools
- staffing management tools
- PDA capabilities

Connect(x) HealthWare provides the software infrastructure, tools, and expertise that enable more efficient medical practice management.

Our philosophy is that it all starts with the "information core" that feeds and drives clinical workflow and the business process.

Consider the potential benefits:

- reduction in overhead and resources
- increased cash flow
- productivity improvements
- better resource utilization
- decreased billing cycles
- anytime, anywhere access to medical information and images
- increased connectivity between facilities
- ...and ultimately better patient care



We believe that medical operations of all types and sizes can benefit from our technology and approach to the business of medicine.



A Single Source for a Healthy Medical Practice.

www.connectxhealthware.com

- Our products are designed for medical professionals, by medical professionals.
- We make our technology solutions affordable and attainable for all medical facility sizes and types.
- We design our products using the latest technologies (eg, Microsoft .Net) with a focus on core functionality.
- Our ultimate goal is to improve the business of medicine.
- We can bring the total solution -- information and image management systems, billing and collections, as well as consultative and project management support.

Contact us today for a complimentary consultation and product demonstration.